

Norfolk Vanguard Offshore Wind Farm Appendix to the Comments on Responses to Written Questions

**Appendix 23.1 – Greater Wash SPA
common scoter distribution and
Norfolk Vanguard Offshore Windfarm**

Applicant: Norfolk Vanguard Limited

Document Reference: ExA;WQRApp23.1;10.D2.3

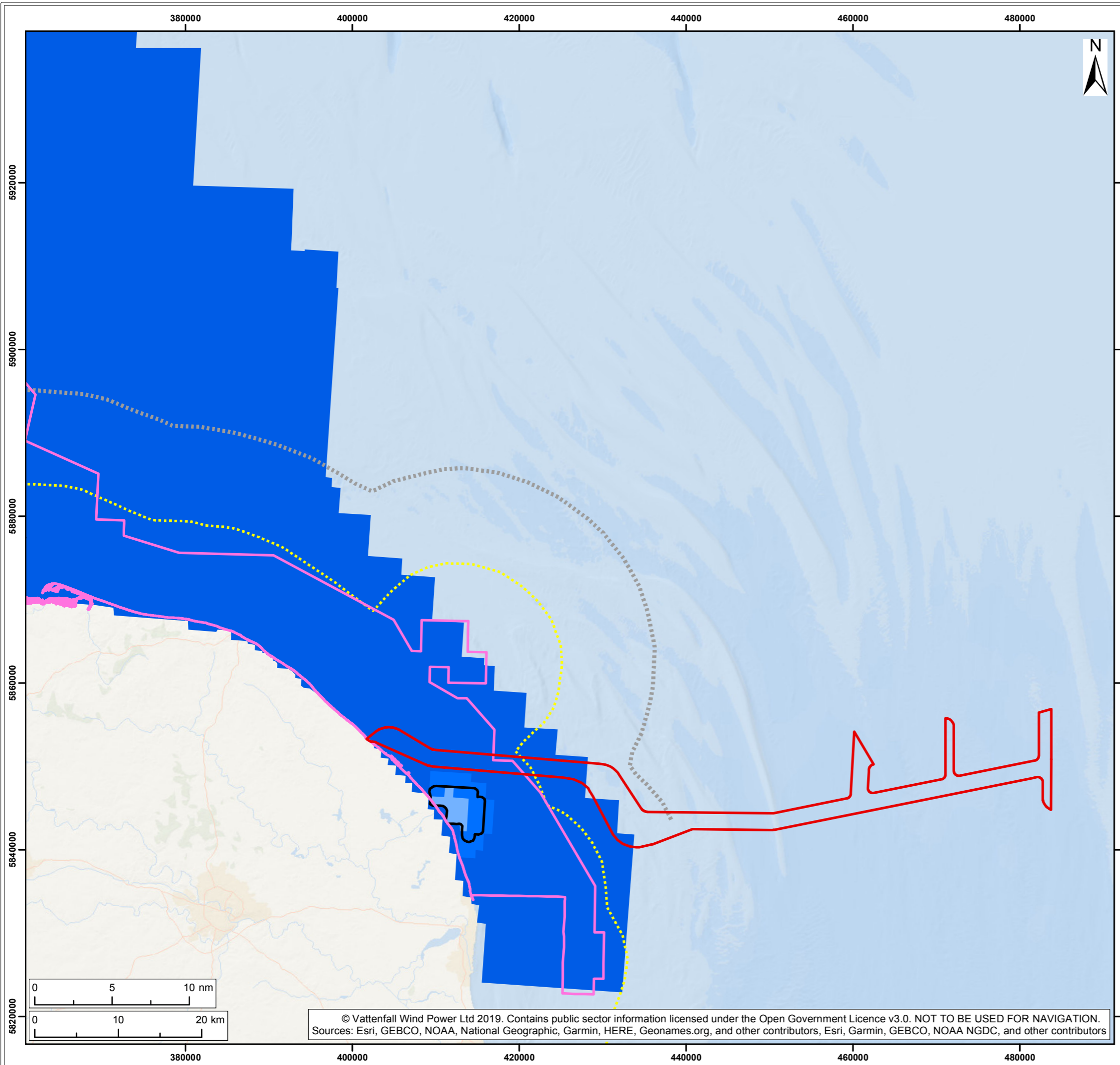
Deadline 2

Date: January 2019

Author: MacArthur Green

Photo: Kentish Flats Offshore Wind Farm





Legend:

- Norfolk Vanguard Offshore Cable Corridor
- Greater Wash SPA Boundary
- 12 NM Territorial Sea Limit
- 6 NM Limit

Common Scoter Density (Birds per km2)

- 0.00 - 0.70
- 0.71 - 2.34
- 2.35 - 4.52

MCA Density Threshold

Natural England and JNCC (2016)

Project: Norfolk Vanguard	Report: Applicant's Comments on Responses to the ExA's First Written Questions
------------------------------	---

Title:
Greater Wash SPA Common Scoter Distribution and Norfolk Vanguard Offshore Cable Corridor

Figure: 1	Drawing No: OffsCCorridor_SPAE_VWP003.1				
Revision: 01	Date: 25/01/19	Drawn: EAP	Checked: MT	Size: A3	Scale: 1:450,000

Co-ordinate system: ETRS 1989 UTM Zone 31N EPSG: 25831

VATTENFALL

MacArthur Green

© Vattenfall Wind Power Ltd 2019. Contains public sector information licensed under the Open Government Licence v3.0. NOT TO BE USED FOR NAVIGATION. Sources: Esri, GEBCO, NOAA, National Geographic, Garmin, HERE, Geonames.org, and other contributors, Esri, Garmin, GEBCO, NOAA NGDC, and other contributors